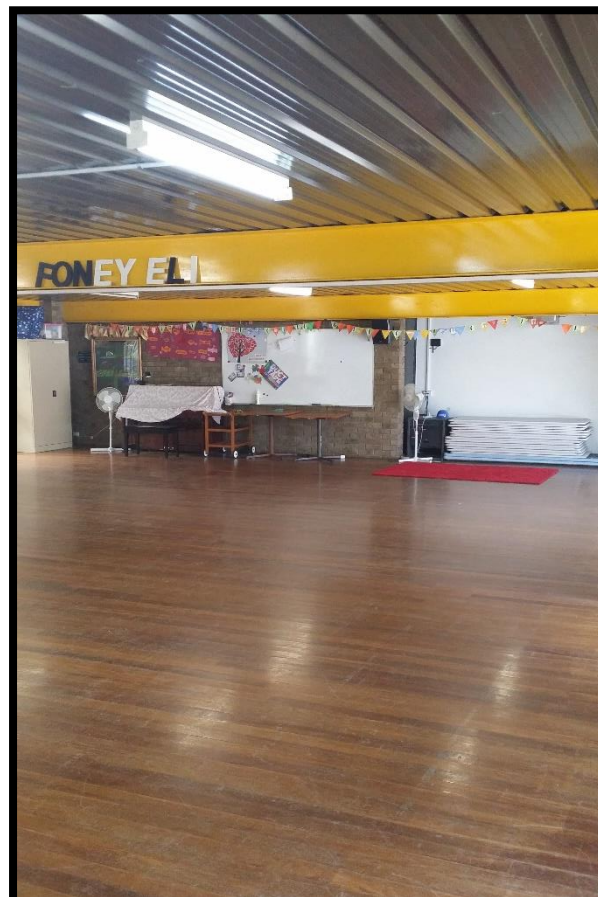
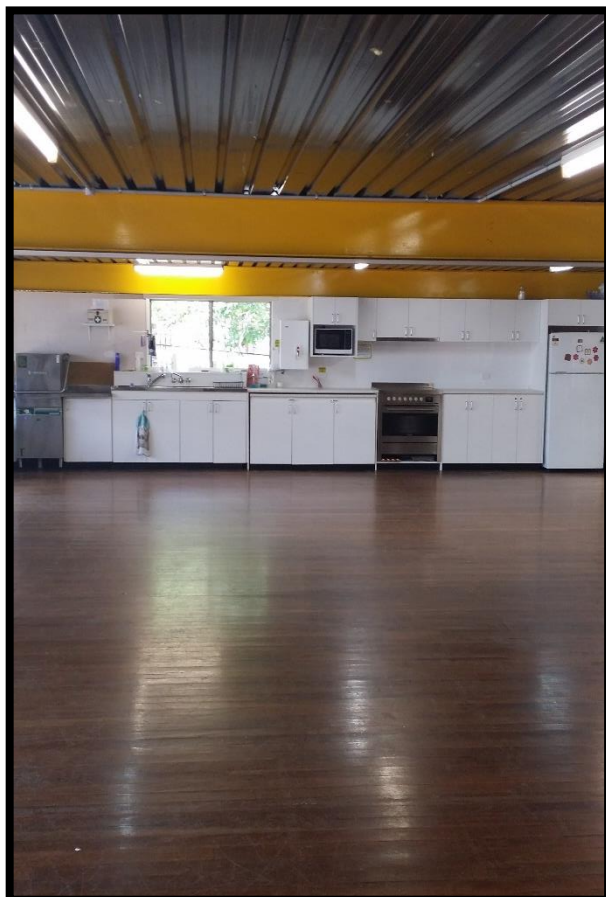


UPPER JOHN KNOX HALL



FEATURES

- ✓ Size: Approximately 8m x 14m
- ✓ Wooden floors
- ✓ Pedestal/floor fans
- ✓ Kitchen area
- ✓ Toilets – No (*toilets available downstairs, around the back of the building*)

RATE

Hourly: \$22.00 (including GST)

½ day (4 hours): \$70.00 (including GST)

AVAILABILITY

Day	Mornings	Afternoon	Evening
Monday	<i>Unavailable</i>	12:00 pm – 4:30 pm	<i>Unavailable</i>
Tuesday	<i>Unavailable</i>	12:00 pm – 6:00 pm	6:00 pm – 8:30 pm
Wednesday	<i>Unavailable</i>	12:00 pm – 6:00 pm	6:00 pm – 8:30 pm
Thursday	<i>Unavailable</i>	12:00 pm – 5:00 pm	<i>Unavailable</i>
Friday	<i>Unavailable</i>	12:00 pm – 4:30 pm	<i>Unavailable</i>

If you are interested in the use of this room, carefully review the following Terms and Conditions before completing the *Use of Facilities Application Form* on our Website.

TERMS AND CONDITIONS OF USE OF FACILITIES

- Our facilities are available for use on a **recurring or long-term** basis only.
- We are unable to offer the use of our facilities on a single-use basis. This excludes events such as Weddings, Baptisms or Funerals.
- Use of our facilities must not impact on the mission and vision of the Gap Uniting Church and must not be in conflict with bookings of a similar nature that might already be in place.
- **Insurance and Indemnification:**
 - The User agrees to effect public liability insurance for an amount of not less than \$10 million per occurrence. A Certificate of Currency must be provided to the Church before any application can be approved.
 - The User agrees to keep the policy in force for the duration of the period of use, and to submit a copy annually upon the renewal of such policy.
- A **Licence Agreement** and **Certificate of Currency** must be submitted to the church at least three weeks before the commencement of use.
- The User agrees to be responsible for all first-aid requirements during the use of the premises.
- The use of alcohol is strictly prohibited on the church premises.
- The premises must be left in a clean and tidy condition.
- Payment is due within seven (7) days of invoice.
- Rates include GST.
- Method of payment for hall hire is electronic funds transfer (eft) – details on invoice.
- **NB: COVID-19 requirements:** These may vary depending on the restrictions/requirements that are in place at the time of hall use (for example, User to submit a Safety Plan; sign off check lists at the end of each period of use; etc.)